

CENIBRIT

Hands on guide

Cembrit Edge Paint - Deco



CEMBRIT

Cembrit Edge Paint - Deco



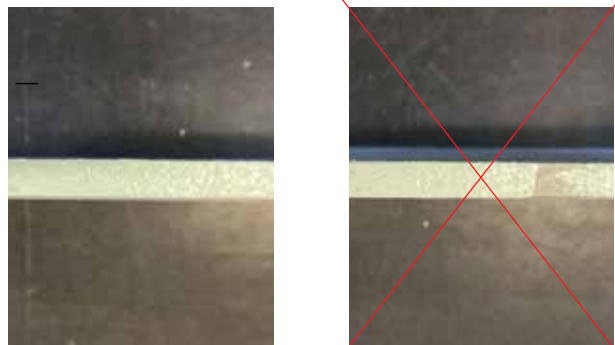
Before you start edge painting Cembrit Deco, be sure you have all necessary things to perform the task and make sure to cover the area before painting.



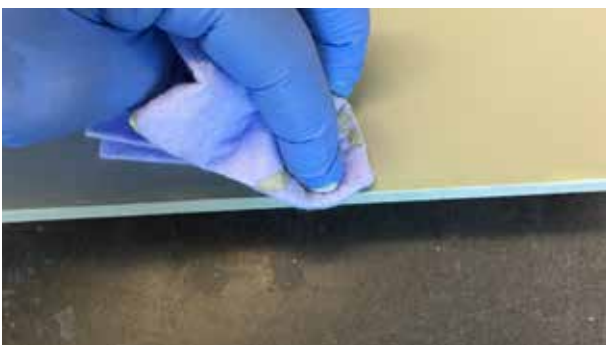
Before you start, the edge and the board surfaces must be wiped off to remove any dirt or dust.



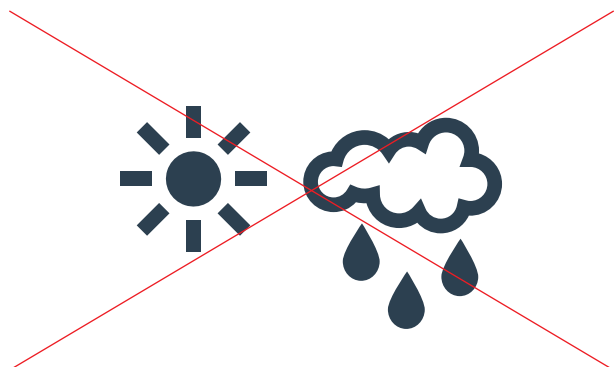
Apply an appropriate amount of paint on the roller so that the sponge is saturated. Apply the paint without pressing too hard and ensure to do it slowly.



Make sure that the entire edge is covered with Cembrit Edge Paint.



Excess Cembrit Edge Paint must be removed with a clean cloth immediately after the edge is painted. If this is not done, it will be difficult to remove and leave visible marks.
Never stack Cembrit Deco boards that have just been edge painted.



Do not edge paint in direct sunlight or rain. Board and air temperature should be between +5 and +30°C (optimal +20°C). Relative humidity of air below 80%.