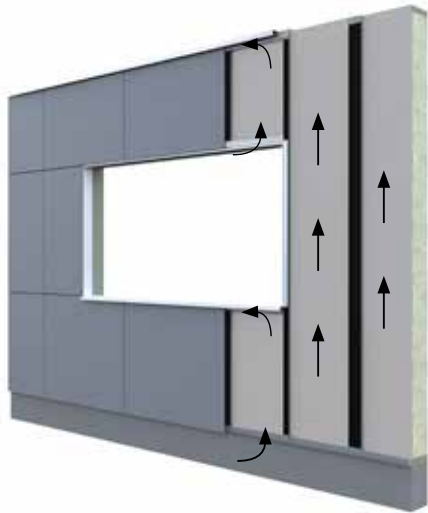
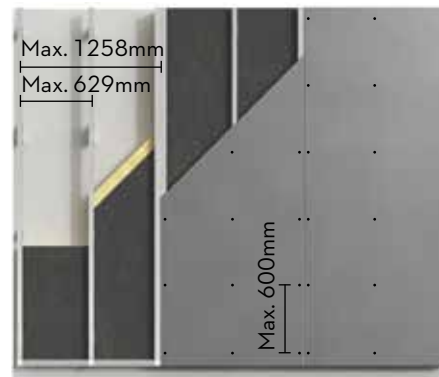


The self-ventilating facade



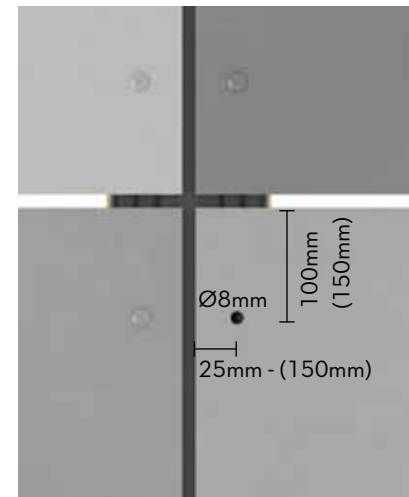
Air is pulled into the construction through an opening at the base of the facade. Unobstructed ventilation must be ensured throughout the facade's height. The ventilated area behind the boards must be at least 20mm. There must be a min. ventilation gap of 10mm or 100cm² per meter at openings.

Screw and batten distances



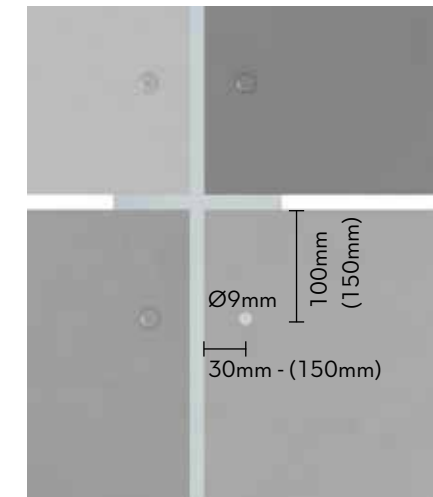
Max support distance: 629mm o.c.
Max screw/panel distance: 600mm o.c.

Distances on wood

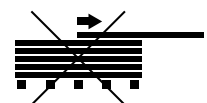
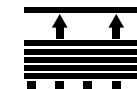
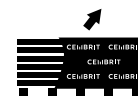
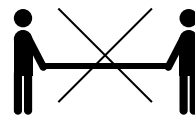
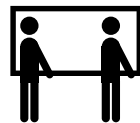


Fixing distances from the top of the board should be min. 100mm and max. 150mm. Fixing distances from the side of the board should be min. 25mm and max. 150mm.

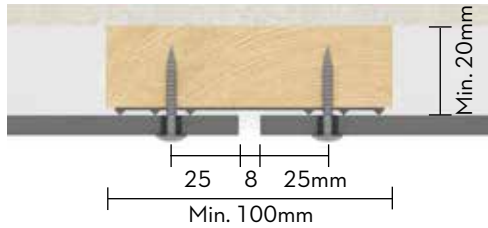
Distances on steel/aluminium



Fixing distances from the top of the board should be min. 100mm and max. 150mm. Fixing distances from the side of the board should be min. 30mm and max. 150mm.



Wood structure



Batten width should be min 100mm for supporting battens and 45mm for central battens. When using timber battens, always use Cembrit EPDM with profiled ribs.

Screw: pre-drilling with $\varnothing 8\text{mm}$



Applying Cembrit Facade Screws

Ensure that Cembrit Facade Screws are centrally located in pre-drilled holes. When inserting the Cembrit Facade Screw, please be careful not to overtighten the screw - especially near the edges and corners of the boards.



If using fixing points for wood, the hole diameter should be $\varnothing 5\text{mm}$.



Cembrit Facade Screw

SCR-W 4.5x36mm $\varnothing 12\text{mm}$ head



Cembrit Facade Wing Screw

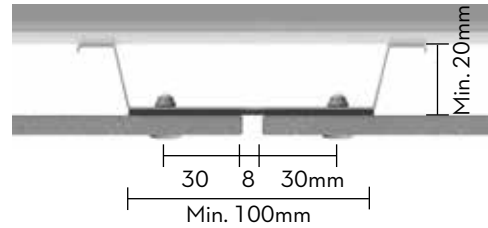
4.8x40mm $\varnothing 10\text{mm}$ head
Max. screw distances o.c 400m



Cembrit EPDM 3x50/100mm



Steel profiles

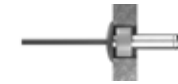


Cembrit recommends that the steel has a min. thickness of 0.7mm. The max. length of the steel profile is 3000mm. The profiles behind joints should have a min. width of 100mm, and the middle profiles should have a min. width of 40mm. Always use flat EPTL/EPDM on steel profiles.

Rivet: pre-drill facade boards with $\varnothing 9\text{mm}$ and in steel with $\varnothing 4.8\text{mm}$



Rivet - Fixing point hole diameter $\varnothing 9\text{mm}$. Insert a Cembrit Fixing Sleeve in the hole before the rivet is fixed.



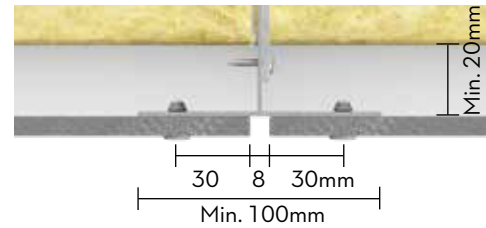
Cembrit Rivet Steel with washer
RIV-S EPDM Washer 4.8x20mm



The Stand-Off Head must be used for all rivets. This provides a small space between the board and the rivet head to allow for movement caused by moisture or temperature changes.



Aluminium profiles



Cembrit recommends that the aluminium is of minimum 1.8mm thickness. Maximum steel profile length is 3000mm.

T profiles behind joints should be min. 100mm width, and the L profiles should be min. 40mm width.

Rivet: pre-drill facade boards with $\varnothing 9\text{mm}$ and in aluminium with $\varnothing 4.1\text{mm}$



Rivet - Fixing point hole diameter $\varnothing 9\text{mm}$. Insert a Cembrit Fixing Sleeve in the hole before the rivet is fixed.



Cembrit Rivet Alu with washer
RIV-A EPDM Washer 4.0x20mm



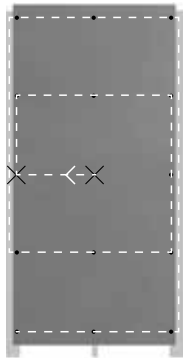
The Stand-Off Head must be used for all rivets. This provides a small space between the board and the rivet head to allow for movement caused by moisture or temperature changes.



All

Facade boards must be installed using two fixing points*. These should be as close to the board center as possible and must be aligned horizontally.

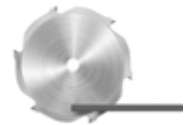
*Optional for wood



To ensure a neat finish when cutting Cembrit Rock boards, it is important to use the correct blade. Contact your local Cembrit office for more information.

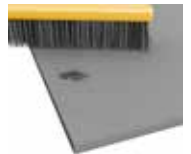
When cutting Cembrit Rock, the board must be cut from the backside.

To ensure a neat cut, the blade should just break through the fibre cement board without cutting in the stone surface.



Never use water when cutting Cembrit facade boards.

Remove dust and gravel from the board after cutting or drilling the board.



For more information go to www.cembrit.com

CEMBRIT

As with all building materials, safety precautions must be taken into account and local laws and regulations must be observed.

